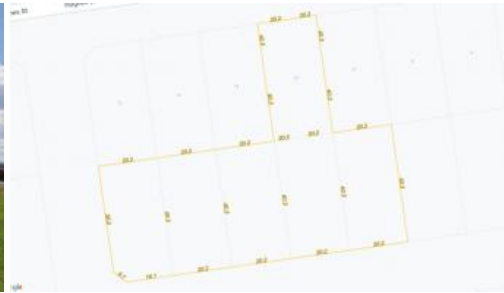




Mulgildie



OVER AN ACRE ON 6 TITLES – LAND IN TOWN (4847M2)

In the quiet country hub of Mulgildie there is an opportunity to snap up 6 Amalgamated blocks of land (they were originally 6 separate titles of 809m2).

Mulgildie has a primary school, local café & store, Post Office. It's 13 km (or 11 mins) from Monto which has an IGA, Foodworks, Schools, Hospital, Mitre 10, 2 pubs, cafes, banks, everything a regional town has.

Mulgildie is on the Silo Art Trail and is relatively close to Cania Dam & Wuruma Dam for fishing etc.

Combined it's over an acre of land to use as your own.

The above information provided has been furnished to us by the vendor/s. We have not verified whether or not that information is accurate and do not have any belief in one way or the other in its accuracy. We do not accept any responsibility to any person for its accuracy and do no more than pass it on. All interested parties should make and rely upon their own inquiries in order to determine whether or not this information is in fact accurate.

Price	\$55,000
Property Type	residential
Property ID	2408
Land Area	4,847 m2

AGENT DETAILS

Cheryle Rayson - 0414 882 575

OFFICE DETAILS

Bundaberg
245 Bourbong St Bundaberg QLD
4670 Australia
07 4153 3773

